

Biotinylated Cynomolgus GFRAL/GFR alpha-like Protein

Cat. No. GFL-CM401B

Description

Source	Recombinant Biotinylated Cynomolgus GFRAL/GFR alpha-like Protein is expressed from HEK293 with His tag and Avi tag at the N-Terminus. It contains Gln20-Glu351.
Accession	XP_015304775.2
Molecular Weight	The protein has a predicted MW of 40.7 kDa. Due to glycosylation, the protein migrates to 50-70 kDa based on Bis-Tris PAGE result.
Endotoxin	Less than 1EU per µg by the LAL method.
Purity	> 95% as determined by Bis-Tris PAGE > 95% as determined by HPLC

Formulation and Storage

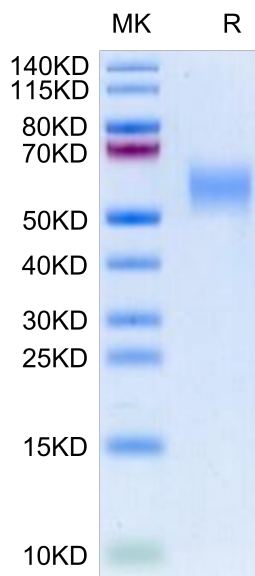
Formulation	Supplied as 0.22µm filtered solution in 20mM PB, 400mM NaCl (pH 6.0).
Storage	Valid for 12 months from date of receipt when stored at -80°C. Recommend to aliquot the protein into smaller quantities for optimal storage. Please minimize freeze-thaw cycles.

Background

GFR alpha -like (GDNF receptor-alpha-like) is a distant member of the GDNFR family of proteins. Mature human GFR alpha-like is a 376 amino acid (aa) type I transmembrane protein. It contains a 333 aa extracellular domain, a 20 aa transmembrane domain and a 23 aa cytoplasmic domain. GFRAL is a brainstem-restricted receptor for GDF15 which regulates food intake, energy expenditure and body weight in response to metabolic and toxin-induced stresses.

Assay Data

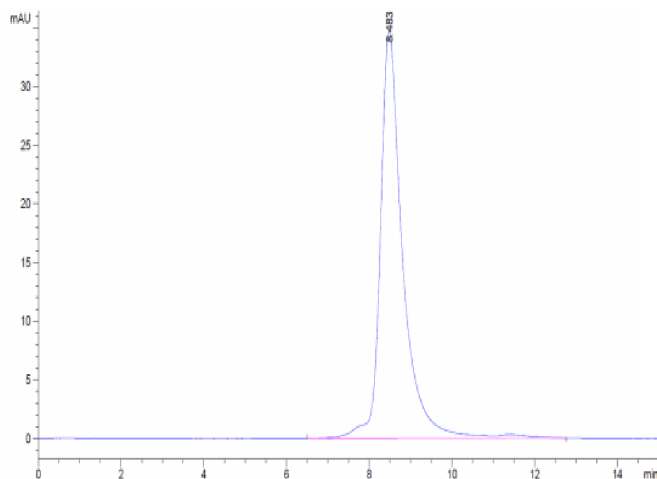
Bis-Tris PAGE



Biotinylated Cynomolgus GFRAL on Bis-Tris PAGE under reduced condition. The purity is greater than 95%.

SEC-HPLC

Assay Data

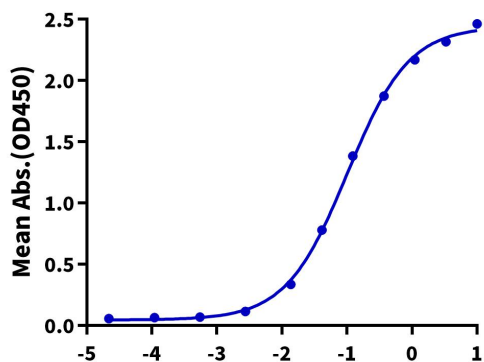


The purity of Biotinylated Cynomolgus GFRAL is greater than 95% as determined by SEC-HPLC.

ELISA Data

Biotinylated Cynomolgus GFRAL, His Tag ELISA

0.2µg Cynomolgus GDF15, His Tag Per Well



Immobilized Cynomolgus GDF15, His Tag at 2µg/ml (100µl/well) on the plate. Dose response curve for Biotinylated Cynomolgus GFRAL, His Tag with the EC50 of 101.8ng/ml determined by ELISA.

Log Biotinylated Cynomolgus GFRAL, His Tag Conc.(µg/ml)